

EMD GP38 PRSL CAB LOCOMOTIVE



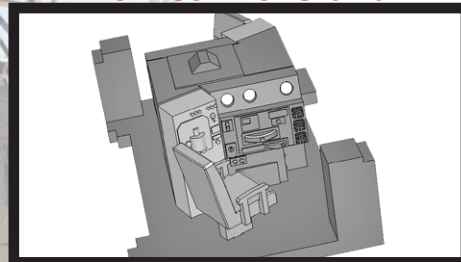
Photo courtesy of the Kevin EuDaly collection.

MoPower
UNINTERRUPTED LOCOMOTIVE POWER

ESU

LOK SOUND
EST. 1999

Box Control Stand



Double Control Stand



- **FIRST TIME IN PLASTIC! THE "DUAL CONTROL STAND" CAB**
- **ICONIC LOCOMOTIVE FROM THE LATE 1960s STILL OPERATING TODAY**
- **THREE DIFFERENT CAB INTERIORS — ALL ROADNUMBER SPECIFIC**

The GP38 might be the most versatile locomotive ever made. It packed a punch with 2,000 hp, low or high short hoods and paved the way for future "GP" models to follow. 706 of these four-axle beasts were manufactured at EMD's La Grange Plant, at the heart of railroad world. During the 1970s, 80s and 90s, the GP38 was common power on road freights, locals and yard jobs. If you traveled to Chicago, you were bound to see a GP38 operating for any of the usual class one roads.

Of the 706 built, a good portion of the GP38s were rebuilt to either -2 or -3 standards. The -3 upgrades brought updated electrical systems and the addition of a computer microprocessor (Quantum, Woodward or EMD's EM2000 computer system). Many of the GP38 locomotives continue to roll off the miles for class ones, regionals or short line railroads. There are even a handful of GP38s operating at tourist and museum lines!

The EMD GP38 PRSL "Dual Control Stand" Cab Locomotive features:

- **PRSL "dual control stand" cab — A first in plastic!**
- Highly detailed cab interior featuring three different control stand variations (box, double and rebuilt single stands)
- Incredible underframe detail including traction motor cables, air filters and a silly number of separately applied parts
- Road-specific battery box doors
- Separate metal grab irons and handrails installed at the factory
- Operating headlights, rear lights, white class lights, ditch lights and beacons (where appropriate).
- Highly detailed cab interior
- Correct fuel tank sizes per road number
- Multiple styles of stepwells
- See-through, etched steps
- Suggested minimum radius: 18"
- Appropriate cab or nose headlights
- Now featuring Cannon and Company licensed fans
- Multiple dynamic-brake hatches and air filters
- DC/Silent (21-pin DCC Ready) or DC/DCC/ESU LokSound
- MoPower capacitor system for uninterrupted DCC power

MSRP

No Sound **\$249.95** USD
w/Sound **\$359.95** USD
No Sound **\$319.95** CAD
w/Sound **\$469.95** CAD



CANADA: 500 ALDEN ROAD • UNIT 21 • MARKHAM • ONTARIO • L3R 5H5
USA: PO BOX 796 • HIGGANUM • CONNECTICUT • 06441
Tel. 905.474.3314. Fax. 905.474.3325. Visit. www.rapidotrains.com

RAPIDO



EMD GP38 PRSL CAB LOCOMOTIVE

**HO
SCALE**



BNSF Railway – (PRSL Cab) Swoosh Logo ("Smurf" Blue) – Era: 2009+

Road #	Item # (DC/Silent)	Item # (DC/DCC/Sound)
2047	38040 <input type="text"/>	38540 <input type="text"/>



BNSF Railway – (PRSL Cab) H3 (Orange/Black/Yellow) – Era: 2016+

Road #	Item # (DC/Silent)	Item # (DC/DCC/Sound)
2047	38041 <input type="text"/>	38541 <input type="text"/>



Bangor and Aroostook – (PRSL Cab) BAR (Red/Gray/Black) – Era: 1983+

Road #	Item # (DC/Silent)	Item # (DC/DCC/Sound)
91	38042 <input type="text"/>	38542 <input type="text"/>
92	38043 <input type="text"/>	38543 <input type="text"/>
93	38044 <input type="text"/>	38544 <input type="text"/>
94	38045 <input type="text"/>	38545 <input type="text"/>



Conrail – (PRSL Cab) CR (Blue) – Era: 1980s+

Road #	Item # (DC/Silent)	Item # (DC/DCC/Sound)
7672	38046 <input type="text"/>	38546 <input type="text"/>
7674	38047 <input type="text"/>	38547 <input type="text"/>



Conrail – (PRSL Cab) CR (Blue) – Era: 1980s+

Road #	Item # (DC/Silent)	Item # (DC/DCC/Sound)
7904	38048 <input type="text"/>	38548 <input type="text"/>
7905	38049 <input type="text"/>	38549 <input type="text"/>



Eureka Southern – (PRSL Cab) EUKA (Yellow/Orange) – Era: 1980s+

Road #	Item # (DC/Silent)	Item # (DC/DCC/Sound)
30	38050 <input type="text"/>	38550 <input type="text"/>
31	38051 <input type="text"/>	38551 <input type="text"/>



Pennsylvania-Reading Seashore Lines – (PRSL Cab) PRSL (DGLE) – Era: 1968/70-1976

Road #	Item # (DC/Silent)	Item # (DC/DCC/Sound)
2001	38052 <input type="text"/>	38552 <input type="text"/>
2005	38053 <input type="text"/>	38553 <input type="text"/>
2007	38054 <input type="text"/>	38554 <input type="text"/>
2009	38055 <input type="text"/>	38555 <input type="text"/>



***NOTE:**

All 3D CAD renders and artwork are subject to revisions before final production.

MSRP

No Sound **\$249.95** USD
w/Sound **\$359.95** USD

No Sound **\$319.95** CAD
w/Sound **\$469.95** CAD



CANADA: 500 ALDEN ROAD • UNIT 21 • MARKHAM • ONTARIO • L3R 5H5
USA: PO BOX 796 • HIGGANUM • CONNECTICUT • 06441
Tel. 905.474.3314. Fax. 905.474.3325. Visit. www.rapidotrains.com

RAPIDO